



PARTNERSHIP

Project coordinator



ALMA MATER STUDIORUM
UNIVERSITÀ DI BOLOGNA

Project partners



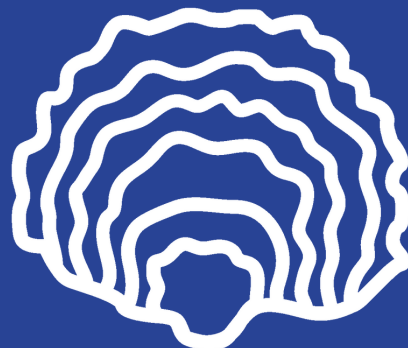
Comune di **Ravenna**



PARCO DELTA DEL PO
EMILIA-ROMAGNA



Associated partner



LIFE NatuReef

Reference: LIFE22-NAT-IT-LIFE-NatuReef/101113742

Period: 1/07/2023 - 30/06/2027

Total eligible budget: € 3'183'057,

EU contribution: € 1'909'832 (60%)

Coordinating Beneficiary: Alma Mater Studiorum -
Università di Bologna

Principal Investigator: Prof. Massimo Ponti

Follow us!



<https://site.unibo.it/life-natureef>



[life.natureef.project](https://www.instagram.com/life.natureef.project)



[LIFE NatuReef](https://www.facebook.com/LIFE-NatuReef)



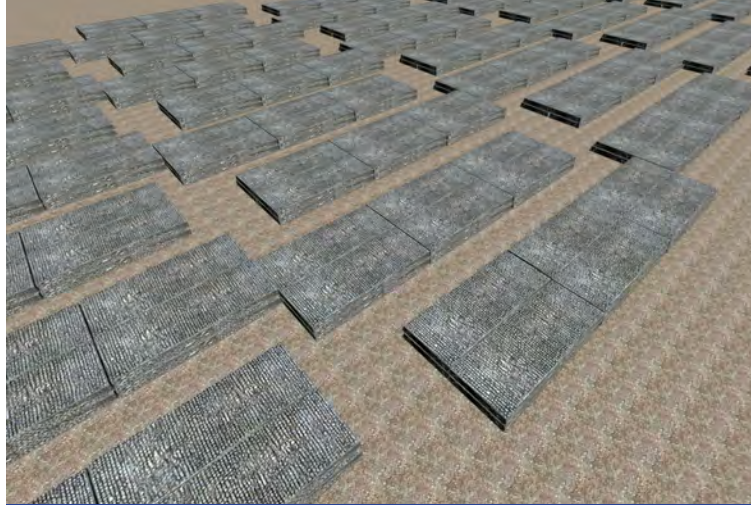
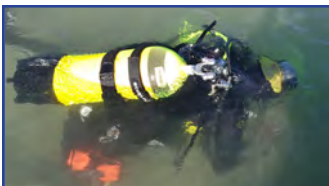
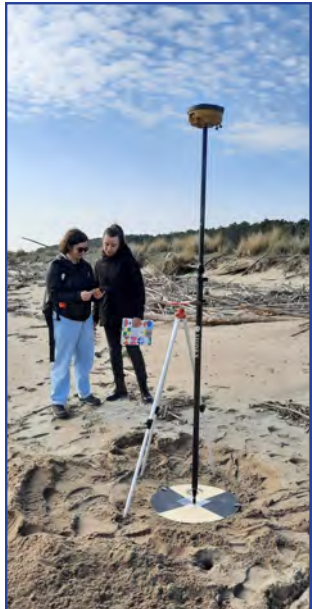
Nature-based
reef solution for
coastal
protection and
marine
biodiversity
enhancement



THE PROJECT

LIFE NatuReef project **restores ancient marine habitats** by creating native **oyster** and **sabellaria** reefs near the Bevano River mouth, in the northern Adriatic Sea.

These biogenic reefs provide essential ecosystem goods and services, feeding and nursery ground, and boost **biodiversity** and **coastal protection** by stabilising sediments, dissipating wave energy and counteracting coastal erosion.



PROJECT ACTIONS

Baseline & monitoring

Assess *ante operam* conditions and monitor biodiversity and coastal evolution.

Basal reef construction

Design and build limestone reefs suitable for hosting marine life.

Biogenic reef implementation

Promote the establishment of native oysters and sabellaria.

Outreach & engagement

Promote dissemination and public involvement.

Sustainability & replication

Ensure the longevity, adaptability, and replicability of this nature-based solution.



PROJECT AREA

The Bevano River mouth in Ravenna, Emilia-Romagna Region, Italy, is a Natura 2000 site (SPA/SAC IT4070009) preserving one of the last non-urbanized coastal areas of the northern Adriatic Sea.

